

Keeping you in touch with BArts and the local Arts scene

## No.40.November 2023

Edited by leerayner\_arts@hotmail.com 01992 467420 / 07426 447812



### November

### Thomas Hood

No sun—no moon!  
 No morn—no noon—  
 No dawn— No sky—no earthly view—  
 No distance looking blue—  
 No road—no street—no 't'other side the way  
 No end to any Row—  
 No indications where the Crescents go—  
 No top to any steeple—  
 No recognitions of familiar people—  
 No courtesies for showing 'em—  
 No knowing 'em!  
 No travelling at all—no locomotion,  
 No inkling of the way—no notion—  
 "No go"—by land or ocean—  
 No mail—no post—  
 No news from any foreign coast—  
 No park—no ring—no afternoon gentility—  
 No company—no nobility—  
 No warmth, no cheerfulness, no healthful ease,  
 No comfortable feel in any member—  
 No shade, no shine, no butterflies, no bees,  
 No fruits, no flowers, no leaves, no birds,  
 November!

C19C writer Thomas Hood's tongue in cheek reflection on the dreariest month of the year, written when 'smog' was a particular problem in cities and there were fewer man-made distractions to cheer the way to midwinter and Christmas festivities.

**S.A.D. (Seasonal Affective Disorder) sufferers will know the feeling of wanting to hibernate somewhere cosy and warm until mid March... BUT.....there are some interesting things to do between now and Christmas, so check our list and start booking!**

**For full details, see BArts' programme/ website and Spotlight venue**



### November

- 1st** My Kind of Music **PIANO CONCERT**
- 8th** Winter Flowers **FLORAL ART**
- 12th** Express Yourself **DANCE PRODUCTION**
- 13th** Theobalds Farmhouse Garden **TALK**
- 16th –18th** Sinderabba **ADULT PANTO**
- 16th-18th** A Bunch of Amateurs **COMEDY**
- 23rd** Christmas Hits by the Beatles **TALK**
- 23rd** Finding Wildlife in Epping Forest **TALK**
- 29th** Feet of Clay **LUNCH**
- 30th** A Dickens of a Christmas **LECTURE**



### December

- 2nd** Friends and Lovers **MUSIC AND POETRY**
- 6th** My Kind of Music **PIANO CONCERT**
- 13th** Countdown to Christmas **FLORAL ART**
- 14th** Christmas Entertainment **TALK**

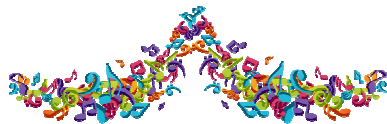




More Local Entertainment!

# November

- 3rd** The Opera Boys **MUSICALS**
- 4th** Mum's the Word **COMEDY REVUE**
- 9th** The Illegal Eagles **TRIBUTE**
- 10th** The Carpenters' Songbook **TRIBUTE**
- 11th** The Elvis Years **TRIBUTE**
- 19th** The Most Haunted **PARANORMAL SHOW**
- 23rd** Jongleurs **LIVE STAND-UP COMEDY**
- 24th** Luther Live **TRIBUTE**
- 26th** Buddy Holly and the Cricketers **TRIBUTE**
- 28th** Victorian Plum's Old Time Music Hall
- 29th** The D-Day Darlings Christmas Special



# December

- 8th** Jongleurs Christmas Special **LIVE COMEDY**
- 12th-30th** Cinderella **PANTOMIME**
- 16th—24th** Santa's Grotto



## The Borough of Broxbourne Draft Arts, Culture and Heritage Strategy



This document, dated June 2023, sets out to define the borough's existing strengths and weaknesses, based on the result of public consultation, a mapping exercise, a specific heritage report and an Audience Agency Engagement Area Profile Report.

The predominantly voluntary arts' sector (which includes BArts) is identified as 'low value and growth'.

The Mapping exercise, surprisingly, identified **25** local festivals and events and **29** creative businesses!!

**Key results** The most popular cultural entertainment was  
**Going to the theatre 51%**  
**Attending Pop / Rock concerts 43%**

The biggest barrier to doing more cultural activity was  
**Lack of provision locally 67%**  
**Not enough information 54%**

**Future Plans are defined within 6 main themes:- Vibrant Places, Thrive, Grow, Create, Flow, Connect** with an emphasis on businesses, a skilled workforce, freelancers and social enterprise, partnerships, volunteering, community, health and well-being.

There are 12 pages of details of how these aims might be implemented and the partnerships envisaged. Slightly *worrying* is the mention of artists using empty shop windows to display their work. If in *addition* to a *proper* art gallery, that would be great, but with the loss of the Spotlight bar exhibition space that BArts pioneered and used successfully for 20 years, this would seem to be a backward step rather than *progress*.

High hopes that these plans *will* be realised. With memories of previous initiatives that didn't *quite* make it.... fingers crossed and watch this space!!



# Mayhem Theatre and Creative Arts

MAYHEM THEATRE & CREATIVE ARTS  
INVITE YOU TO THEIR ANNUAL DANCE  
PRODUCTION...

## Express Yourself!

SUNDAY | 12 | NOVEMBER  
2023

SHOW TIMES: 2.30PM & 6.00PM  
THE SPOTLIGHT, HODDESDON

*The truest expression of  
people is in the dance and  
music - Agnes De Mille*

WE HEARD YOU  
CREATIVE COMMUNITY

**Annual Dance Production**  
**Sunday, Nov 12th**  
2.30 pm and 6.00 pm  
**At The Spotlight**

Friends of  
**Lowewood Museum**

From Coffee Houses  
To Clarice Clift



**Tuesday, Nov 21st**

Coffee from 7.30  
for 8.00 pm

United Reformed Church,  
Mill Lane, Broxbourne

Visitors Welcome £3

Lowewood Museum's next exhibition will be on view for the next seven months, from November to June, as the subject of Broxbourne's Rock and Roll in the 1950s to 1970s is likely to be particularly popular. There will be some *live* music events, during this period.

# Hoddesdon Players

HODDESDON PLAYERS  
Amateur Dramatic Society presents

## A BUNCH OF AMATEURS

by  
IAN HISLOP & NICK NEWMAN

16th - 17th Nov. 7.30pm, 18th Nov. 3.00pm 2023  
the Spotlight Theatre, Hoddesdon  
tickets@hoddesdonplayers.org.uk

This amateur production is presented by arrangement with Concord Theatricals Ltd.



**Nov 16th-18th**  
**Spotlight Theatre**

01992 441946

The trials and tribulations of  
amateur theatre .....

Keen to boost his flagging acting career, fading Hollywood action hero Jefferson Steele arrives in England to play King Lear in Stratford – but it's not the birthplace of the Bard, it's a sleepy Suffolk village and the cast are a bunch of amateurs trying to save their local theatre from developers. ....

Find out about the  
early days of skiffle music.  
Explore the local groups and  
musicians who started their careers  
in the boys clubs in the Borough.  
Listen to musician's memories.  
Have a go at playing a skiffle  
instrument.

# Borough Beats

AN EXHIBITION CELEBRATING ALL THINGS

## ★ ROCK 'N' ROLL ★

in the Borough of Broxbourne 1950s-1970s

AT LOWEWOOD MUSEUM

**Saturday 4 November 2023 – Saturday 1 June 2024**  
(museum will be closed over Christmas period. Friday 22 December – Friday 12 January)

SPECIAL MUSIC EVENTS TAKING PLACE DURING THE EXHIBITION  
FIND OUT MORE VISIT [WWW.LOWEWOODMUSEUM.COM](http://WWW.LOWEWOODMUSEUM.COM)

**ADMISSION FREE.**

Lowewood Museum  
High Street, Hoddesdon EN11 8BH  
T: 01992 445596  
W: lowewoodmuseum.com

@lowewood  
@lowewoodmuseum.com  
@lowewood\_museum

Exhibition is on the ground floor  
(wheelchair accessible).

Lowewood  
**MUSEUM**  
Lowewood Museum Trust Ltd. Charity Number: 102095



Designed by  
Broxbourne Design & Print

**BOROUGH OF  
BROXBOURNE**  
www.broxbourne.gov.uk

01370 46

# The u3a Page....Three Local Branches

## Broxbourne



**Thurs, Nov 16th**  
**Christmas Hits by the Beatles**  
**Speaker: Martin Orkin.**  
**Spotlight 10.00 am**

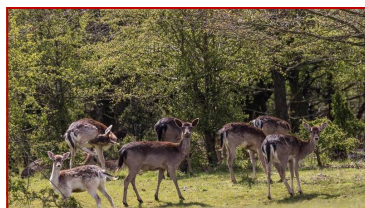
**NO DECEMBER MEETING**



**Thurs, Jan 18th 2024**  
**How Old Movies Saved My Life -**  
**Speaker: Mel Byron**  
**Spotlight 10.00 am**

[broxbourneu3a.org.uk](http://broxbourneu3a.org.uk)

## Cheshunt



**Thurs, Nov 23rd**  
**'Finding Wildlife in Epping Forest'**  
**Speaker: Peter Warner .**  
**Laura Trott Centre from 1.30 pm**

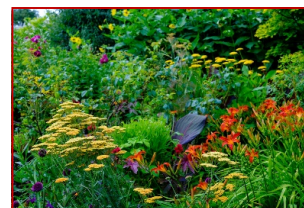
## Christmas Meeting

**Thursday, December 14th**



[cheshuntu3a.org.uk](http://cheshuntu3a.org.uk)

## Lea Valley



**Mon Nov 13th**  
**From Field To Floribunda**  
*The creation of Theobalds' farmhouse garden*  
**Speaker : Alison Green**  
**Spotlight, 2.00 pm**

**NO DECEMBER MEETING**



**Mon Jan 15th 2024**  
**Chicksands Priory—the most haunted house in England?**  
**Speaker : Damien O'Donnell**  
**Spotlight, 2.00 pm**

[lvu3a@live.co.uk](mailto:lvu3a@live.co.uk)



The recently formed u3a Knit and Natter group has proved very successful. They've made new friends, laughed a lot, drunk lots of tea and coffee, eaten lots of biscuits and joined forces with the Dobb's Weit Crafty Cuppa group to make dozens of squares to create warm blankets which were recently presented to the hospice department at Harlow Hospital

U3a actually stands for university of the third age, which tends to sound old and stuffy, however the organisation is anything *but*, with dozens of different interest and activity groups and some slightly unusual opportunities.

**Broxbourne** offers Cycling, Guitar Playing and Wood Turning.

**Cheshunt** has Curry Club, Model Making, Retail Therapy and *Almost* Loose Women

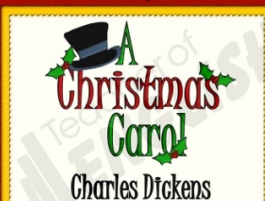
**Lea Valley** has Astronomy. Eat Your Way Round the World, Sugarcraft and Members On Their Own

**Annual Membership subscriptions are different for each branch, between £12 and £20**

## November 30th A Dickens of a Christmas!

Charles Dickens revived the Christmas traditions with his warm portrayal of Christmas in the domestic setting; with plum pudding, piping hot turkey, games, dancing and family cheer by the hearth.

His enduring master piece, 'A Christmas Carol' published in December 1843 immortalises the spirit of Christmas Cheer. .



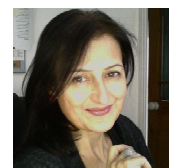
## About Us

**We organise lectures, special interest days and outings, support arts projects in East Herts and document local church artefacts.**

At the meetings, Coffee is served from 9.45 am and the lecture starts at 10.30am and lasts about one hour. Non-members are welcome to attend (£8 contribution please).

## January 25th 2024 British Art from Egg to Bacon ( Leopold Augustus Egg)

This talk, by Lydia Baumann surveys a hundred years of Art in Britain, from the Victorian Leopold Augustus Egg to Francis Bacon, and examines ways in which Britain's isolated position resulted in an art which, while occasionally showing European influences, for the most part remained steadfastly and uniquely British.



**Meetings at The Spotlight at 10. 30am**  
**[info@theartsocietyeastherts.org.uk](mailto:info@theartsocietyeastherts.org.uk)**

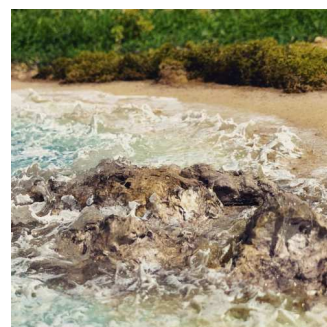
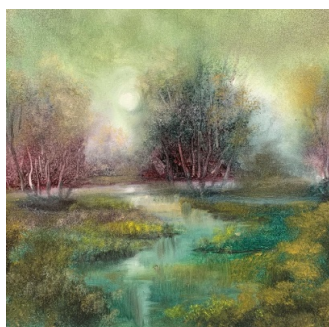


## D'Arcy Sallion, Member of Hazelwood Art Group

Local man D'Arcy attended Ware College and Middlesex University before working for various design studios in the music industry, developing websites and eventually setting up his own studio.

When he found time to paint for his own pleasure again, he used oils at first, but gradually moved from landscapes to a unique style of textured three-dimensional art, using mixed media and even including plastic bags, polystyrene and sand to depict woodlands, clouds and the sea. He is also a keen photographer and videographer.

As an enthusiastic member of BArts' affiliated Hazelwood Art Group, D'Arcy's work has been part of several BArts' exhibitions at the Spotlight. In August this year, his work was accepted for retailing at Fishpool's in Waltham Cross and, most recently, was part of the art group's exhibition in Hoddesdon on October 28th, in aid of Breast Cancer Awareness. [darcysallion.com](http://darcysallion.com)



# Hoddesdon Camera Club

Some stunning images from winners of a recent competition



**London Bridge  
Bus Terminus  
and the  
London Eye Hub**

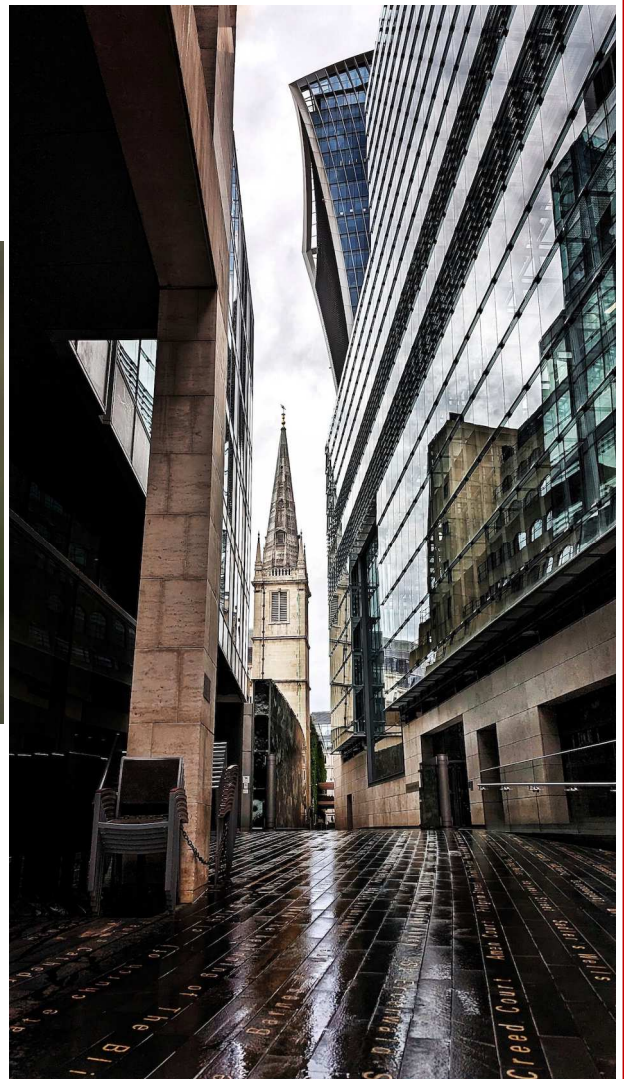
by

**Bernard  
Broomhead**

**Word on the Street  
by  
David Spraggett**



**Hummingbird Moth  
by Christine Holt**





The Spotlight, Hoddesdon



Millfield Theatre, Edmonton

Harlow Playhouse

Gordon Craig, Stevenage



British Pantomime is a blend of many *different* forms of theatre that include Ancient Roman mime and dance, traditional Italian Commedia Dell'Arte of the C16, masques, the Harlequinade characters of Pierrot and Columbine, classic fairy tales, slapstick comedy and British Music Hall. Audience participation is an essential feature, as are cross-dressing, risqué jokes, spectacular scenery and costumes. An elderly man usually plays the dame, while an attractive young woman usually plays the hero in male costume.

A 'fairy godmother' character who, traditionally, enters from stage right transforms other characters into better versions of themselves. They are usually cheered. Villains enter from stage left and are hissed and booed. This particular tradition remains from the mediaeval Mystery plays, where Heaven was on the right and Hell on the left. The Latin word for left is *sinistra*, which is where our word *sinister* comes from.

At some point in the performance, a ghost follows characters and the audience yell "He's behind you." The characters disappear one by one until the remaining character, usually the Dame, comes face to face with the ghost and the *ghost* runs away!

Modern pantos usually include popular songs, one of which is for audience participation, and a current star makes a special appearance in one of the lead roles, which helps to sell tickets.

Some of the early pantomimes were performed at Easter, rather than at Christmas and this occasionally still happens in England. There'll be one at the Spotlight next Easter.

Pantomime is 'corny' and far from subtle, but it is often the first piece of live theatre that children see and remember, so it remains an important part of our traditional theatre scene.

# Post-Covid

.....Reducing our options  
and *changing the way we Live?!*

Recent studies and surveys suggest that there are some on-going *social* effects from the Covid pandemic that are affecting our daily lives in a number of minor ways, but, collectively having a significant impact.

A steep rise in the cost of living is obviously something that affects whether we can *afford* to spend anything on leisure and pleasure, but it also impinges on the provision of facilities and staffing costs, making some reductions in services inevitable and whittling away at some of our simple pleasures that contribute to our sense of well-being.

It seems that membership of clubs and groups has reduced by about one third over the past two years and there's an element of *apathy* which is making recruiting *new* members much harder than expected. Transport and fuel costs have risen steeply. Local bus services don't tie in very well with meeting times during the day, or performance times for evening entertainment and minimum taxi fares for the shortest, local journey are now £5 each way—a big consideration, particularly for pensioners.

The Spotlight is one of the Borough of Broxbourne's biggest assets with an excellent stage and auditorium, a large bar and café area and huge, attractive grounds with a lake. While managing to sustain a programme of popular entertainment that appeals to the *majority*, it can no longer risk an *occasional* event for other tastes as *commercial* considerations are paramount.

Reductions in daily opening hours and box office and catering facilities are also affecting day-time use of the venue, particularly by community groups, for whom the venue was partly originally intended. No lunches, no sandwiches no cakes = no customers (!) and the regulars of former times are now taking their *own* sandwiches to daytime community events, eating *elsewhere*, or have simply given up attending, which is having a knock-on effect with group memberships.



BArts' popular **My Kind of Music** monthly piano concerts have also been affected by the venue's reduction in facilities. BC—Before Covid—there could be as many as 70 people turning up for the music and a lunch... now it's nearer 30 or so and they have to *pre-order* their hot food a week in *advance*, or buy a pizza on the day. The food is good, the staff are lovely, but the “*empty chairs and empty tables*” have changed the *atmosphere* enormously and clearly put off many previously regular customers. Becoming a cashless venue isn't popular either—to flash your card just for a cup of coffee seems strange.

The foregoing local examples of minor changes since Covid illustrate how the *little* things can, collectively, become a *big* thing and actually have an effect on people's lives and society in general, if they are repeated all over the country. Of course these issues don't compare with long-Covid or mental health problems, but they *do* matter.

The terrifying possibilities of a passive, zombie-like population staring at screens all day to watch soul-less 'entertainment' or receive Big Brother's latest decree, as depicted in Huxley's **Brave New World** and Orwell's **1984**, seem to be becoming ever more likely, so we need to resist and protest as strongly as possible before it's too late!